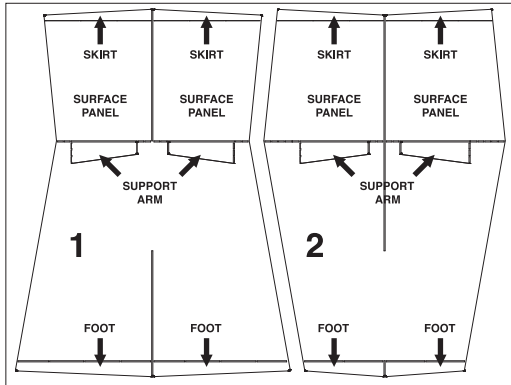
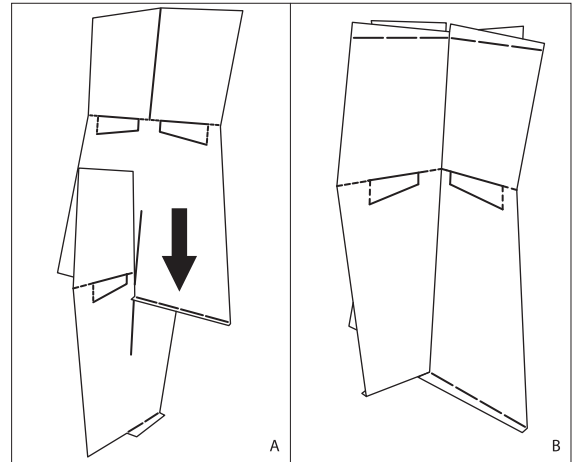
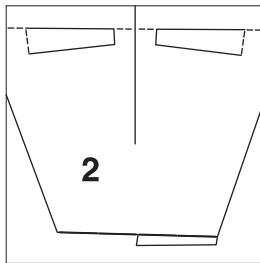
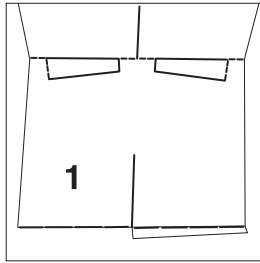


# ORIGAMI Table

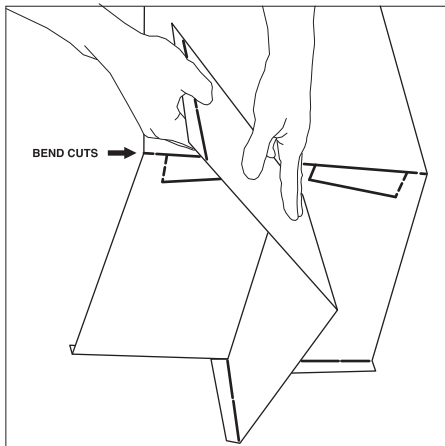
**IMPORTANT:** Follow instructions carefully! Read all instructions before starting. Printable instructions available online at: [www.mioculture.com/pdf/origami.pdf](http://www.mioculture.com/pdf/origami.pdf)



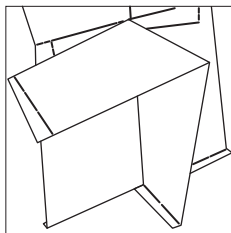
**STEP 1** Please use the diagram above to identify the parts of the table mentioned throughout these instructions. Carefully unpack the sheets and place over a soft and clean surface like a rug or a carpet. Place sheets as shown in diagram above. Bend the right FOOT of each sheet towards you at a ninety-degree angle and both left feet in the opposite direction to ninety degrees as well. Apply the enclosed adhesive felt protective strips to all four feet.



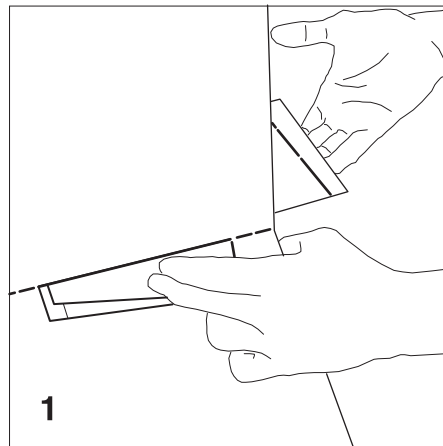
**STEP 2** Gently insert sheet 1 into sheet 2 as seen in illustration A above. Ask for someone's assistance to avoid bending or scratching the sheets. Once inserted the sheets should look like illustration B above.



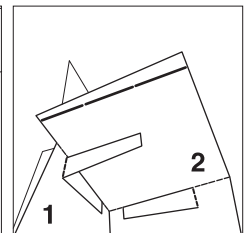
**STEP 3** Bend the right SURFACE PANEL of sheet 2 downward in the same direction as the foot. Bend slowly using both hands. Bend approximately 15 degrees past the BEND CUTS of sheet 1.



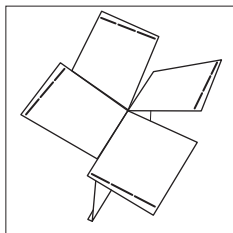
Once bent the parts should look like the diagram above.



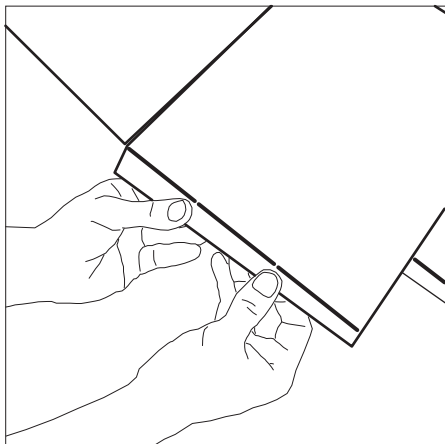
**STEP 4** Gently lift the SURFACE PANEL slightly above the bend cuts and push the SUPPORT ARM of sheet 1 underneath it.



The above illustration explains how the SUPPORT ARM of sheet 1 is holding the SURFACE PANEL of sheet 2. **IMPORTANT:** Each SURFACE PANEL must be supported by the SUPPORT ARM of the opposite sheet.



**STEP 5** Repeat STEP 3 and STEP 4 for each of the SURFACE PANELS.



**STEP 6** Bend the SKIRT on each one of the SURFACE PANELS downward. Use both hands to bend the SKIRT evenly.

